

ST PETER'S CHURCH

PARISH OF ONEHUNGA

DIOCESE OF AUCKLAND



PARISH PROFILE - 2024



Our vision is to love God and to love all that God loves

OVERVIEW

The Parish of Onehunga, in the Diocese of Auckland is seeking a priest to become its next Vicar. This is a full-time appointment. **Details for making an application can be found on the final page.**

The parish is one of the oldest in the city of Auckland, having been established in 1848. The boundaries include the community of Onehunga, the industrial area to the east including Te Papapa and much of Penrose.

St Peters Church is located in the heart of the Onehunga town centre. It is unique in its location at the central intersection and administrative centre of Onehunga, highlighting the critical importance of St Peters' contribution within this community.

OUR MISSION STATEMENT:

Our vision is to love God and to love all that God loves.

We believe that God's love is abundant, open-hearted and readily available to all people.

We aim to create a hospitable Christian community in which people of all ages, abilities, disabilities, cultures, sexual orientations and socio-economic situations are included as equally valued participants in our congregational life.

We cherish our diversity and offer a safe place of belonging to anyone who wishes to explore their beliefs in an atmosphere that encourages discussion, nurtures relationships and supports spiritual growth.

We enjoy worshipping God, made known to us through Jesus of Nazareth, endeavoring to do so in ways that both honour and explore our faith traditions. We seek to live our faith in ways that are relevant to our daily lives.

We desire dialogue and shared experiences with people of other faiths.

We seek to be good neighbours to the people of Onehunga and surrounding suburbs, and to make a positive difference in our wider world.

We endeavour to respond to human need, to transform unjust structures, and to care for our environment.

We celebrate being human in the knowledge that God dwells within our humanity and delights when we live humanely and lovingly.



Our vision is to love God and to love all that God loves

LOOKING TO THE FUTURE

As we look to appoint our next Vicar, the congregation have taken time to discuss parish life and to share our hopes and aspirations for the future.

We offer you these reflections so that you might have a glimpse of who we are as a community, and our sense of how God might be calling us. We look forward to welcoming a new Vicar who will help us to develop these plans and join us in this mission.

WHAT WE VALUE MOST ABOUT OUR CHURCH

There are many reasons that people feel included and at home at St Peter's.

We rejoice that this community:

- is accepting and affirming
- is multi-ethnic and truly welcoming of diversity
- places a high value on social justice and has a desire to be outward facing, reaching the community
- has a unique and central location in the Onehunga community. We have good interaction with the community and the church is well used by it
- has a long history as we are aware of those who have gone before us
- has a worshipful atmosphere
- is a place of down to earth and real people
- is made up of mixed socio-economic backgrounds
- enjoys fellowship within worship
- is a community in which people love and support one another



Our vision is to love God and to love all that God loves

PRIORITIES FOR MISSION AND MINISTRY

As we discussed opportunities for ministry into the future, we looked at our vision through the framework of the Diocesan Healthy Church Model. Details of this model can be found on the Diocesan website: <https://aucklandanglican.org.nz/healthy-church-model>

The opportunities discussed are below. A number of these were then **identified as priorities**, and these are listed in bold.



KNOWING GOD

- Development of prayer groups, bible studies, and theological discussions
- **Priority: Focus on music.** This includes balancing contemporary and traditional music and a group of interested people practising new hymns ahead of Sundays
- Development of contemplative service

SHAPING COMMUNITY

- Developing the Church Fair
- Developing a structured approach to pastoral care
- Increasing the active approach to inclusive community

GROWING IN CHRIST

- **Priority: Initiatives with children and young people**
- **Priority: A focus on discipleship, mentorship and upskilling people to engage in mission in the community**
- Work around belonging, believing, behaving

LIVING BEYOND OURSELVES

- Engagement with groups such as Scouts and Guides
- Engagement with interfaith activities
- **Priority: Engaging further with wider community and looking for opportunities for outreach**



Our vision is to love God and to love all that God loves

QUALITIES, SKILLS AND ATTRIBUTES OF LEADERSHIP

As we look for a Vicar who will help us to develop these plans and join us in this mission, we identified a number of qualities that we believe will be important in leading us.

- Commitment to our mission statement and ethos
- Desire to be involved practically, with us, in parish initiatives
- Ability to balance parish needs with community engagement
- Able to engage with, and relate to the diverse Onehunga community
 - Relatable and down to earth
 - Respecting many forms of diversity (e.g. faith, LGBT+, socio-economic)
 - Maturity to deal with an often complex community
- Pastoral care and mentorship skills
- Relationship builder
- Progressive theology
- Motivational, tenacious and persistent leadership
- Desire to discern gifts in others
- Interest in, and sensitivity to, music



Our vision is to love God and to love all that God loves

LIFE AT ST PETER'S TODAY

OUR REGULAR WORSHIP

Sunday, 9.30am

Family Eucharist

Wednesday, 10.00am

Communion Service

Anointing and prayers for healing are incorporated into the service on the 1st Wednesday of the month.



1st Sunday, 5.30pm

'Stillpoint'

A contemplative service with song, meditative music, reflections and meditative silence.

1st Thursday, 11.00am

Communion Service at Royal Oak Rest Home

YOUNG PEOPLE - GROWING SAINTS

Everyone within our faith community is a 'Growing Saint'; however, we specifically use the name 'Growing Saints' to describe the young people (infants to young adults) who gather within our Sunday morning worship community. Not only do they enjoy a carpeted and furnished area in the front of the church (near the 'up front' worship action); they also have access to toys, puzzles, artwork, and writing materials.



Our vision is to love God and to love all that God loves

COMMUNITY OUTREACH AND CONNECTIONS

VILLAGE WELL

A number of years ago, one of our Vicars remarked, "It's been like a railway station here today, people coming and going, each with their own story, each looking for someone to listen". Another Vicar remarked, "Perhaps more like the Village Well". (Like the conversations that happened around the village well; the conversations Jesus enjoyed).

Before long our 'Village Well' enterprise started in 'The Bridge' every Friday morning from 10:00am to 12:00pm. A small group of parishioners light a candle, share informal prayer, pour coffee and tea to enjoy with some home baking and share in conversation. People from all walks of life notice the welcoming sign outside the door, and join in the company, refreshments and conversation, discussing the vitally important to the less important things happening in their lives. Everyone benefits and God smiles!



A BREATHING SPACE

A Breathing Space is offered in 'The Bridge' in the week leading up to Christmas. It provides a restful place for people to drop in over a period that is particularly stressful for many in our community.

ONEHUNGA EMBRACING FAMILIES

Onehunga Embracing families is a community service that operates out of St Peters on a Saturday morning offering a hot meal and food packages to the Onehunga community. The team come in on Friday afternoon to set up for Saturday Morning.

ORANGE SKY

Orange Sky minister to our homeless community at the same time as Onehunga Embracing Families on a Saturday morning. Their custom-built van parks by the church entrance and provides a shower and full laundry service for members of the community

BABY SENSORY CLASSES

Baby Sensory Classes operate out of the church on a Monday morning.

ALCOHOLICS ANONYMOUS

AA Meets in 'The Bridge' on a Sunday night at 7.30pm.



Our vision is to love God and to love all that God loves

FREE COMMUNITY LIBRARY BOX

This is hosted by St Peters facing on to Onehunga Mall, free books for the readers in our community.

COMBINED PARISH SERVICES

St Peters has a strong relationship with Our Lady of the Assumption Catholic Church and Onehunga Co-operating Parish and we have a number of joint services during the liturgical year. Specifically, we have services on Ash Wednesday, Good Friday, Easter Sunday and during Advent.



ANZAC DAY SERVICE

After the Anzac Day parade in Onehunga, St Peters hosts the service in remembrance of all of the service men and women of Onehunga.



AUCKLAND HERITAGE FESTIVAL

We participate in the Auckland Heritage Festival each September, offering hospitality to visitors and those interested in parish history and church records.

ANNUAL CHURCH FAIR

Held at the end of November each year to coincide with the Onehunga Christmas Parade, the Fair is an important event allowing us to connect with the local community, as well as raise funds. Stalls include second-hand books, bric-a-brac, sausage sizzle, and baking. 10% of the proceeds go to the Parish Council and 10% to Seasons.



Our vision is to love God and to love all that God loves

OUR BUILDINGS

ST PETER'S CHURCH

St Peter's Church is a blend of traditional Gothic and contemporary architecture. The most recently built section, the nave, echoes the meeting house, whareniui, and fale structures of our Māori and Pacific setting. This was designed to express contact with, and openness to, the surrounding community through the use of large expanses of glass.

Added at the same time, 'The Bridge' provides a link to the Onehunga Mall immediately adjacent, as well as being an agreeable space for Parish and Community activities.

THE VICARAGE

Saint Peters has a 3-bedroom brick and tile town house Vicarage at 82J Alfred Street. This has an internal double garage, separate bathroom and toilet, and sits on a low maintenance section down the quiet Barrington Villas Cul-de-sac. This is a short walk to Onehunga village and the church. The vicarage has been recently renovated and is up to healthy home standard. A heat pump was installed in 2019. More pictures of the Vicarage are at the back of the profile.



In terms of public schools, the Vicarage is in the zone for Onehunga Primary School, Te Papapa Primary School, Royal Oak Intermediate School, and Onehunga High School.



Our vision is to love God and to love all that God loves

PARISH FINANCES

Over the past four years donations and fundraising have averaged \$25,500 per annum. Donations and fundraising provided 17% of total Vestry income for the 2023 financial year (1 January to 31 December).

The St. Peters Onehunga Trust was established in 1928 for the purpose of ensuring a continuing ministry at St. Peters. The Trust has significant investments and we acknowledge with gratitude those whose foresight and generosity put in place St. Peters Onehunga Trust. Each year the Vestry receives vital financial support in the form of a Trust Board grant. The grant for 2024 has been budgeted at \$90,000 for the year.

	2023
Donations and Fundraising	23,564
Grants and Bequests	110,715
Rental & Hall Hire	1,674
Interest & Dividends	2,531
Other income	3,886
TOTAL INCOME	140,731



THE LOCAL COMMUNITY

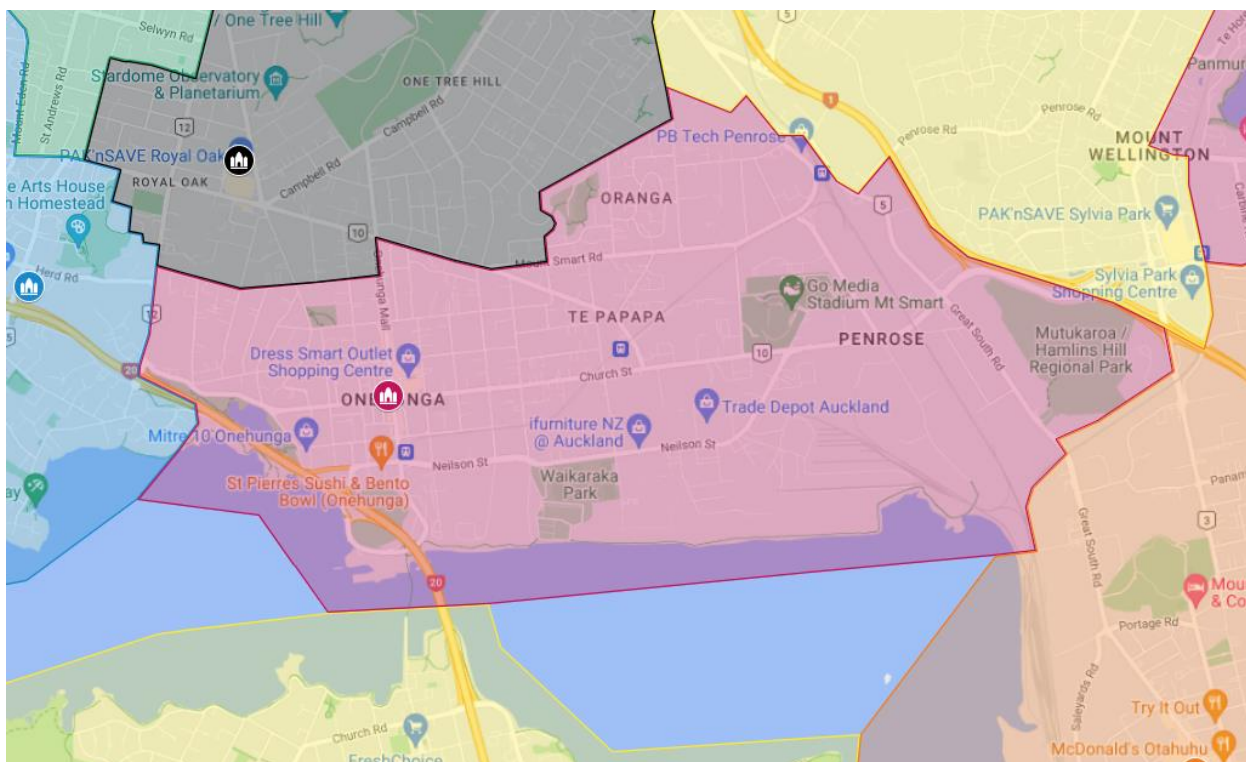
The parish includes the suburbs of Onehunga, Te Papapa, Oranga and Penrose. Penrose is primarily an industrial area so whilst it looks quite large in area it really isn't. According to the 2018 census there were 15,800 residents in the parish.

Although Onehunga was a predominantly working-class suburb for much of the 20th century, it has undergone some gentrification since the 1990s. In recent times, many of the bungalows of the 1920s (along with the earlier villas) have undergone restoration and Dress Smart has reinvigorated commerce in the area.

There are also areas of significant socioeconomic need in Onehunga. It includes many Housing New Zealand properties and council owned pensioner housing. Approximately half of all households in Onehunga do not own the dwelling in which they live. The median income for the area is approximately \$40,000 according to the 2018 census.

Over the last 8 years there has been a significant growth in homelessness in the area which St Peter's has responded to with the hosting of Onehunga Embracing families and Orange Sky. We also have connections into Kahui Tu Kaha and the Auckland City Mission to support housing for the homeless and rough sleepers.

As a community Onehunga is ethnically and culturally diverse. In the 2018 census 55% of the population identified as Pakeha, 10% as Māori, 15% as Pacifica, and 20% as Asian. 40% of the population were born overseas.



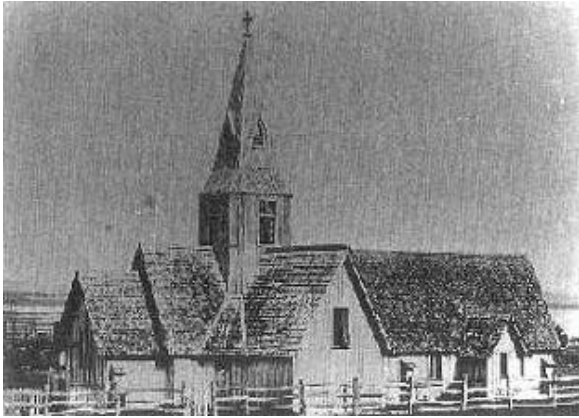
The parish is bounded by Hillsborough (blue), Royal Oak (black), Ellerslie (yellow), Ōtāhuhu (orange) and Māngere East (also yellow, to the south across the Māngere Bridge)



Our vision is to love God and to love all that God loves

PARISH HISTORY

1840 -1930's



In 1847, Onehunga was designated by Anglican Bishop George Augustus Selwyn as a 'parochial district'. That same year a Crown grant of one acre in Onehunga was made to the bishop "as a site for the erection of a church". The first church was built, in timber, on this site in 1848 (one of the earliest church buildings in Auckland). The first service was held on Saint Peter's Day, 29 June 1848. This site has remained a centre of worship and parish life ever since.

As the parish grew, under the guidance of its amazing founder-vicar, Arthur Guyon Purchas, the original wooden church was extended into a much larger building. Porches were added, the nave and the sanctuary were extended, and alterations were made to the heights of the roof and windows. By 1875 the church had reached semi-permanence. It remained almost unchanged for the next 55 years and was known and loved as a fine example of the 'Selwyn' style of church building. The bell, from England, was installed in the tower in 1877; it replaced a much smaller bell.

In the 1920's a decision was made to rebuild the church in permanent materials. 1930 saw the wooden chancel, sanctuary and tower demolished. The transepts were shifted thirty feet, and a new chancel, sanctuary and tower were built of reinforced concrete with a light sandstone finish. The 1877 bell was hung in the new tower and is still rung before Sunday services.

1970-1980's



By the 1970's it was apparent that the old timber nave, which had been attached roughly to the 1930 tower block as a 'temporary nave', needed major repairs and extension if it was to meet the needs of the parish. The congregation discussed all the possibilities of retaining the old building, but finally in 1974 they made the decision to build a new church in permanent materials wrapped around the 1930 tower block.

In 1980, after the congregation had moved their worship space to the parish hall (Grey Street), construction of the new church began. The Auckland School of Architecture was given the old wooden building, and they reconstructed it on a piece of disused railway land near the old vicarage (Grey Street) and it was used as the St Peter's Scout Den for many years. The architectural students were able to discover the secrets of building a 'Selwyn



Our vision is to love God and to love all that God loves

Church' through their experience of rebuilding the old wooden St Peter's structure. The new church was designed by Graeme Pearce, a local architect. The congregation shifted back to the new church in time for Christmas 1980, even though work was not finished. The new building was completed and paid for in time for its consecration by Archbishop Paul Reeves on the celebration of Saint Peter's Day, 28 June 1981, the 133rd birthday of the parish.

TODAY



The church complex now combines the function of church and community centre. In the main church area all the furniture can be moved easily to suit the needs of services, meetings, and other activities. The 1930 section of the building can be closed off from the main area by folding doors, thus creating a chapel space for smaller services and private prayer.

Suspended high between the main church area and chapel is a cross made from timber from the original church. In the chapel can be seen two 'Saint Peter' ('feed my sheep' and 'let down your nets') stain-

glass windows erected in the early 1950's, plus the original permanent baptismal font that dates to the early 1850's. The organ, built in 1952, and extensively rebuilt and extended in 1981, is recognized as a fine instrument, ideally suited to the size of the building. At the other end of the main church area is a contemporary stain-glass window installed to commemorate the 150th anniversary of St Peters. It was designed by Bill MacCormick and crafted by Mary Taka, both members of St Peters congregation. The window depicts Onehunga, past-and-present and was dedicated on the 8 July 2001.

At the Onehunga Mall end of the building is a parish lounge/small hall named 'The Bridge'. It acts as the church's 'shop-front' linking church, main street shops, local businesses, commercial enterprises and the wider Onehunga community.



Our vision is to love God and to love all that God loves

PROFILE OF THE FIRST VICAR - ARTHUR GUYON PURCHAS (1821 – 1906)



Onehunga's first vicar was one of the most remarkable men in colonial New Zealand. The many different aspects of his life illustrate what holistic ministry can mean...

Born in England, he was educated privately before undertaking medical studies at Guy's Hospital, London under the tutelage of Addison & Bright. He took up an appointment at a Liverpool hospital. While a student he heard Bishop Selwyn preach and volunteered immediately but Selwyn urged him to complete his medical studies, realising that there would be great value having a medical missionary in the colony.

He came to New Zealand in 1844 and toured the country before returning to England to deal with various matters and to marry Olivia Challinor. Early in 1846 he sailed again for New Zealand and joined the staff of St John's College where he served as medical officer while pursuing theological studies. He was ordained deacon in 1847 and priest in 1853. He was appointed Vicar of Onehunga in 1847 and remained there until 1875 when he resigned to resume medical practice.

He had great musical ability, helped form the Sydney Choral Society during a short visit and was one of the compilers of an early New Zealand hymnal. He had architectural skills and there is evidence to suggest that he worked with Thatcher in designing the well-known 'Selwyn churches. He designed St Bride's Church in Mauku.

He was deeply involved in community and social service and took a keen interest in the Blind Institute from its inception. He invented a speedy method of preparing plates for printing Braille. He played a full part in the cultural life of the colony. He was concerned to foster respect and understanding between Māori and Pakeha. He was an environmentalist and was a member of the Scenery Preservation Society.

He died in 1906 and is buried at Purewa. He was survived by 10 children from his family of 14.

Dr Purchas' life demonstrates a concern for the physical, intellectual and spiritual aspects (body, mind and soul) of the individual. He shared his life between the church and the wider community. He affirmed the importance of the social and cultural aspects of the community and was one of the earliest environmentalists. He was an intellectual but at the same time, very practical and imaginative.

HMS ORPHEUS 1863

The HMS Orpheus has a special link with St Peters Onehunga, with the chaplain Rev Charles Haslewood, one of the victims of the tragic sinking, buried in the grounds of St Peters.



Our vision is to love God and to love all that God loves

THE VICARAGE – SOME MORE PICTURES



Our vision is to love God and to love all that God loves

MAKING AN APPLICATION

Thank you for your interest in the position of Vicar of the Parish of Onehunga.

Application close on **Friday 25 October**.

The Nomination Committee invites you to lodge a formal application with the committee's Link Person:

Roger Drake

roger@drakedesign.co.nz

The formal application should contain:

- i. A cover letter, addressing how you feel your skills and strengths meet the needs of our parish as expressed in the Parish Profile.
- ii. A copy of your Curriculum Vitae (CV).
- iii. Two sermons (electronic or written).
- iv. The names and contact details of two referees (which should include a lay person who has good experience of your ministry, and a clergy person)

At this stage, for those who are shortlisted, the Committee anticipate conducting interviews between 8th and 10th November.

Please do not hesitate to contact Roger should you have any queries related to this vacancy.

The Committee looks forward to receiving a completed application from you.



Our vision is to love God and to love all that God loves