

# ALL SAINTS HOWICK

DIOCESE OF AUCKLAND



**PARISH PROFILE  
2025**

[www.allsaintshowick.org.nz](http://www.allsaintshowick.org.nz)

## OVERVIEW

The Parish of Howick, in the Diocese of Auckland is seeking a priest to be our next Vicar.

This is a full-time appointment. Details for making an application can be found on the final page.

All Saints Howick is located within the heart of Howick village. Established in 1848 it holds a special place in the history of Howick and the wider community.



At the heart of all our faith and work are the teachings of Christ.

*You shall love the Lord your God  
with all your heart  
and with all your soul  
and with all your mind  
and with all your strength.  
This is the first commandment.  
And a second is this:  
you shall love your neighbour as yourself.*

## OUR CORE VALUES

We seek to be an inclusive worship community, encourage commitment to God, respond to the needs of the community, create a sense of belonging across the generations, foster hopefulness and joy, and strive for justice.

At All Saints' Howick we seek to live out these commandments by:

- ENCOURAGING a commitment of our lives to God, through prayer and a desire for spiritual growth.
- CREATING a sense of belonging and nurture so that all ages are valued, cared for appropriately and given opportunities to learn about the Christian faith.
- PRACTICING inclusiveness at all levels of parish life by
  - Offering an open hearted and open-minded place of welcome which is non-judgemental and accepting of difference.
  - Being committed to ecumenical and interfaith relationships.
- BEING intelligently and sensitively aware of the community around us so that we can respond to the hopes and hurts particular to the people of this area.
- PROVIDING worship that is meaningful, honest and thought provoking.
- NOURISHING the enjoyment of life through fellowship, creativity, humour, spontaneity, and the arts.
- STRIVING for justice in the world and caring for the whole of God's creation.
  - Through education about the environment and the ways in which we can help.
  - Through supporting financially and with prayer, people and organisations who work in various areas of need.
  - Through active service individually and as a church community.
- PRACTICING wise management of the resources of the parish which is proactive and based on principles of good stewardship.

### ***What we value most about our parish:***

The statements above are also what we value most about our parish. We value the sense of belonging and fellowship that we feel when worshipping together as a community. We rejoice that this community has a genuine care for each other, is accepting of diversity, and is welcoming to everyone with no strings attached – *'Come as you are'*.

## **PRIORITIES FOR MISSION AND MINISTRY**

Below are our top priorities as a parish. These priorities are a result of the Future Directions Consultation where we first identified the opportunities for ministry using the Diocesan Healthy Church Model. Information on this model can be found on the [Diocesan Website](#).

After identifying and listening to the opportunities, we identified where our priorities lay.

### ***Top Priorities:***

- 1. Growing ministry with / for young families, children and youth**
- 2. Attention to resources, finances and buildings, to sustain ministry into the future**
- 3. Encouraging and meaningful preaching that is relevant to life today**
- 4. Increasing our outreach and connection to the community**

### ***Opportunities:***

#### ***Knowing God***

- Services that are relevant and all inclusive – ages, nationalities etc.
- Drawing younger families into the congregation.
- Growing music capability – balancing traditional and contemporary
- Sunday night contemplative service once a month

#### ***Shaping Community***

- More opportunities for intergenerational participation (including decision making).
- Engaging with thriving churches to see what works.
- Attention to resources, finances and buildings to improve financial stability.
- Communicating parish life to the wider community.
- Rekindle groups lost during Covid 19.

#### ***Growing in Christ***

- Growth of home groups
- Growing opportunities for ministry with young people.
- Further education opportunities for parish members

#### ***Live Beyond Ourselves***

- Increase connection with wider Howick community – placing the church at the centre of the community.
- Involvement in wider Howick events
- Connecting with the community on key issues
- Something for seekers – e.g. an introductory course

## OUR VACANCY

The vacancy for a new Vicar at All Saints has come about as the result of the departure of Andrew Coyle, our Vicar for the last 11 years, to a new appointment within the Anglican Diocese of Auckland.

After careful consideration with the Parish Council, and the subsequent Future Directions Consultation between the Archdeacon and parishioners, the below were identified as key leadership qualities that are needed to help lead the Mission and Ministry goals of our Parish.

### We are looking for a Priest who

- Can connect, communicate and engage with people from different cultures and age groups.
- Will honour the past, embrace the present, and look to the future.
- Shares our desire for the growth of our parish.
- Is familiar and/ or willing to engage with the maintenance of the buildings and properties as we face ongoing concerns as both areas age.
- Has team leadership and facilitation experience with positive outcomes.
- Is caring and compassionate.
- Has a passion for building relationships with the wider community.
- Delivers encouraging and meaningful preaching that is relevant to life today.
- Has good pastoral skills which focuses on the spiritual, emotional and practical needs of church members

*Selwyn Church Howick – our original church, still lovingly cared for on our church site*



## WHERE WE ARE

Howick is a historic township about 30 kilometres to the south- east of Auckland city. It's known for the Fencible or colony community that was settled by the British in the 1840s. The area is rich with history and houses New Zealand's second oldest church, All Saints Church, built in 1847 under the guidance of Bishop Selwyn.

From the late 1940s to the 1970s the Howick area experienced rapid growth, when in 1947, at its centenary, it had still been a town of only 1,500. Up until the 1980s Howick was surrounded on all sides by farmland, but as Auckland grew and new subdivisions were created Howick was consumed by urban sprawl.

Today Howick is one of the more affluent seaside suburbs of Auckland. Howick is a friendly community village with a market every Saturday from 8.30am-12.00pm. There are many local beaches in the surrounding area with Howick Beach just down the road from All Saints' Church.

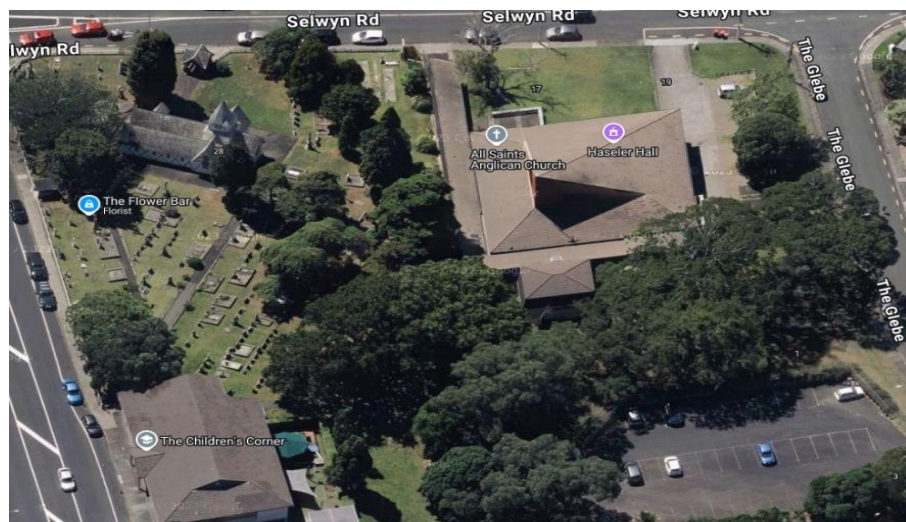
All of the primary, intermediate and secondary schools within the Parish boundaries are highly regarded with excellent academic records balanced by interests in sports and/or the arts.

The drive from Howick to Auckland CBD is about 40 minutes, alternatively a 40 minute ferry from Half Moon Bay.

### *Suburbs of Auckland*

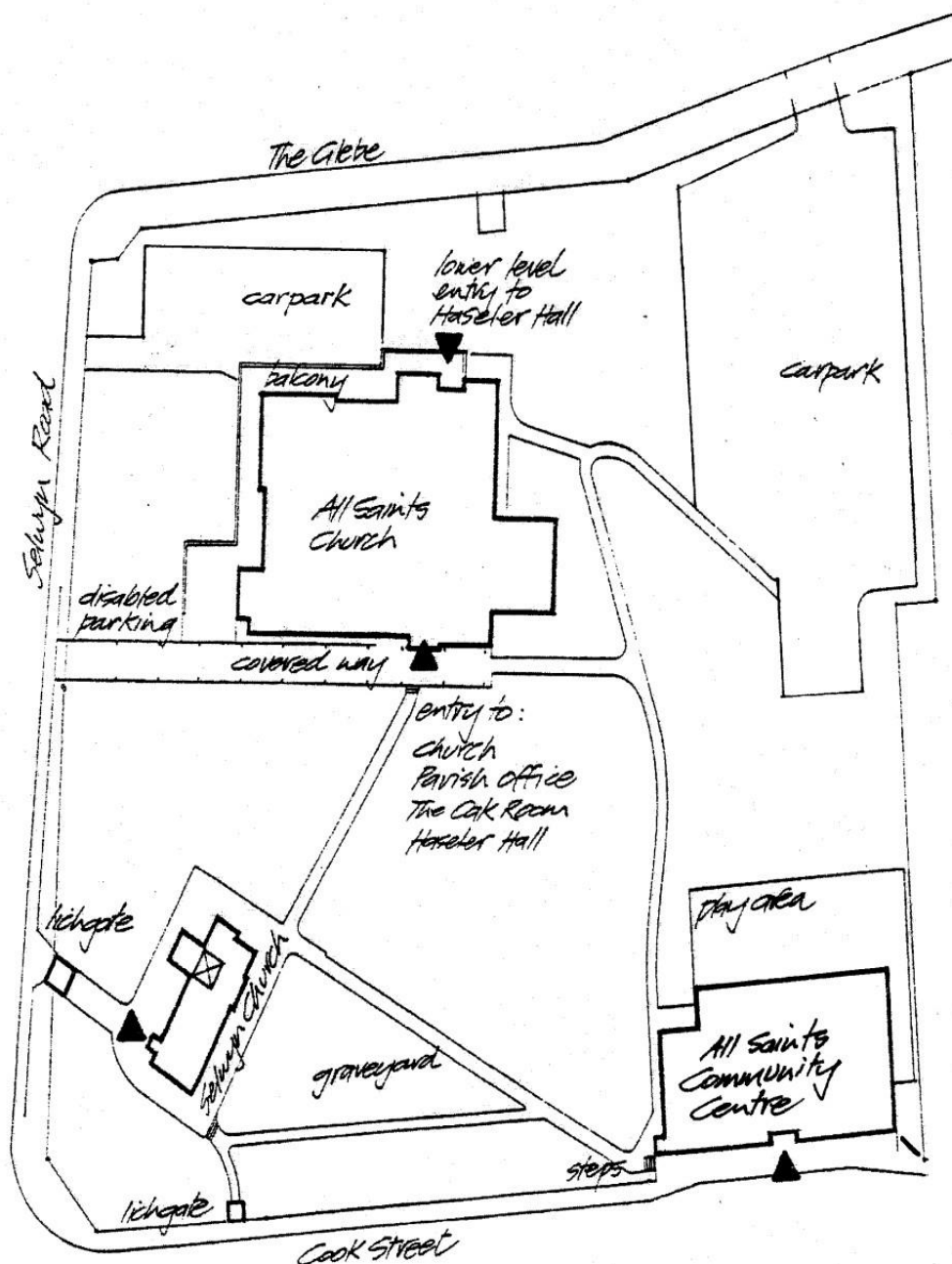


Site map of All Saints church site.  
Church building  
At Centre



## OUR PLACE

The All Saints complex consists of the main church, the Selwyn Church, the All Saints Community Centre, the graveyards and carparks. It is situated on a sloping block of land on the corner of Selwyn Road and Cook Street at the northern end of Howick's main shopping area. The property extends eastwards to The Glebe.



## OUR VICARAGE

The Parish Vicarage was built in 1974 and is situated at 13 The Glebe, about a 100m walk from the parish complex. It is located on the top of a rise and commands views out to the Hauraki Gulf. It is a large family home with 4 bedrooms, lounge, family room, laundry, kitchen, and entrance hall. It has one bathroom and a second shower room and two toilets. There is a standalone 2-car garage on the property.

The property was occupied by the previous vicar and his wife for the duration of their time at All Saints.



Looking towards front entrance of vicarage



View from deck area at front of vicarage



View of vicarage from driveway

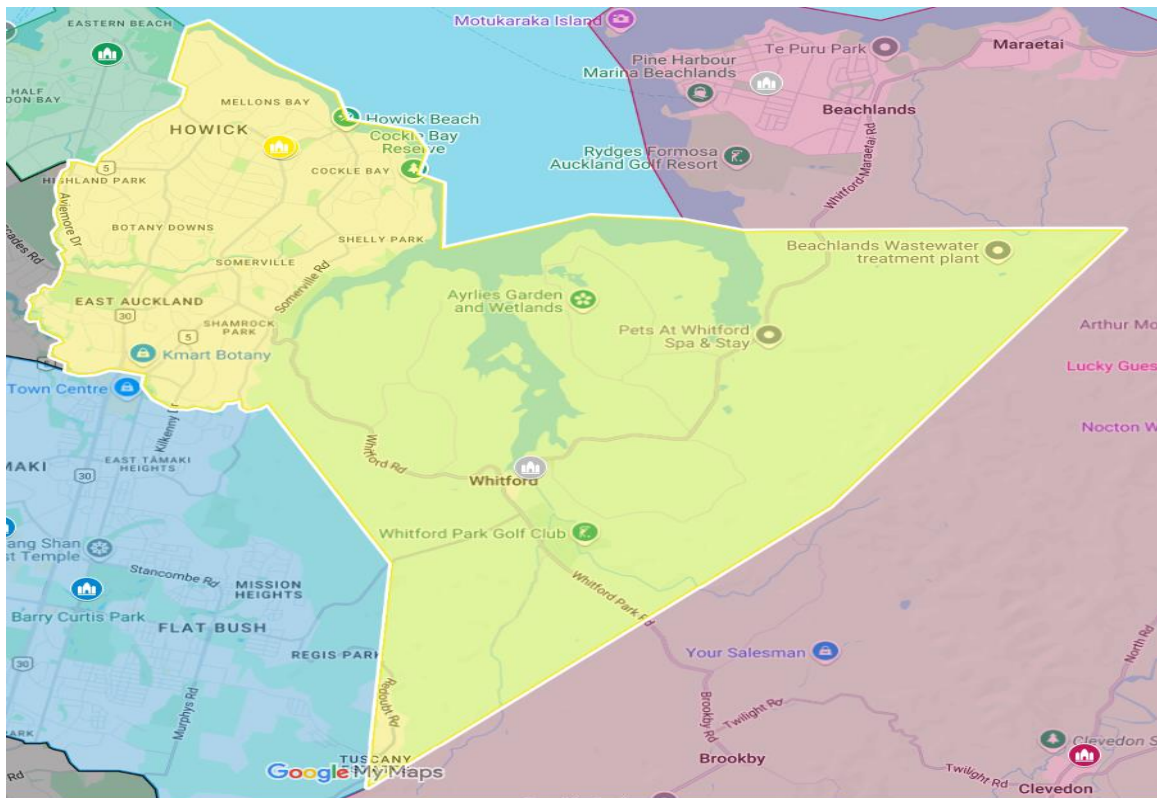


# THE LOCAL COMMUNITY

## PARISH BOUNDARIES

The Howick parish is bounded by the Parishes of Bucklands Beach and Pakuranga (to the west), Clevedon (to the east), and Flat Bush (to the south). All these parishes are in the Southern Region of Auckland Archdeaconry. The boundaries include Howick and the surrounding areas of Cockle Bay, Mellons Bay, Botany Downs and the Dannemora-Kilkenny area.

Whitford is included within the parish boundaries as it is a Mission Venture. That congregation operate entirely independently but can look for support and encouragement from the Howick parish.



## OUR PARISH TEAM

|                               |  |
|-------------------------------|--|
| Lucy Nguyen<br>Hilary Willett | <i><b>Priest Associate (Currently interim Priest in Charge)</b></i><br><i><b>Priest Assistant (Temporary support during vacancy)</b></i> |
| Jim Lam                       | <i><b>Pastor to the Cantonese Congregation (Non-stipendiary Priest)</b></i>  |
| Judy Holt<br>Carolyn Wellm    | <i><b>Warden</b></i><br><i><b>Warden</b></i>   |
| Anne-Marie Hartley            | <i><b>Parish Administrator</b></i>   |
| Fiona DeRidder                | <i><b>Seasons for Growth Coordinator (contracted)</b></i>  |
| Jo Devantier                  | <i><b>Selwyn Centre Programme Coordinator (contracted)</b></i>   |
| Lole Turner                   | <i><b>Foodbank Coordinator (contracted)</b></i>  |

## ORGANISATION OF OUR CHURCH LIFE

Parish Council (The Vestry) meets monthly to encourage and co-ordinate the work of the Parish, and to discuss other administrative, pastoral and spiritual concerns. Parish Council members are elected annually by the Annual General Meeting (AGM) of the Church and also includes ordained Staff members, the two Church Wardens and two Synod Representatives.

Over the past few years, we have become administratively more centralised due to the growing Diocesan requirements of health and safety and accountability coupled with the impact of a smaller congregation. The operation of the Parish comes under the purview of the clergy team with Wardens and Parish Council.

Two helpful parish teams are:

### **Maintenance Team –**

This team is the first group to be advised of maintenance issues of the buildings and grounds. From their initial assessment work is either directly attended to or referred on to/back to Parish Council with any advice. We are faced with a number of maintenance issues as our buildings and grounds age.

### **Pastoral Care Team –**

The care of the people is the mission of the Pastoral Care team, nurturing the parish through co-ordination of the welcome and follow-up of newcomers, the Neighbourhood Project, liaising with Home Communion team, and supporting the Front of House (Welcomers) Team.

## OUR PASTORAL CARE

The well-being of people within and outside the regular congregations of All Saints is a priority, and many forms of pastoral ministry are offered by parish staff and congregational members. We In addition the following ministries and groups operate as the parish and community facing side of our pastoral care

### Bereavement Support

An annual *Remembrance Service* is held in November for those in the community who have recently been bereaved. In addition to clergy pastoral support the parish also supplies its own well resourced booklet: *Preparing for a Funeral and Navigating the Death of a Loved One* to anyone in need.

### Christmas Lunch On Jesus (CLOJ)

CLOJ enables us to serve others by sharing the simple gift of food for Christmas day. Boxes that contain everything needed for a yummy Christmas lunch are then delivered to those who need it.



### Food Bank

All Saints runs a very busy food bank ministry. The food bank is open 4 days a week and has seen a steady increase in clients over the past 4-5 years. It is seen by many in the congregation as an essential service that we provide as part of our community outreach. There is a food bank coordinator who works alongside a small team of volunteers.



### **Home Communion**

A trained team of laity regularly bring communion to parishioners who are homebound and unable to attend church.

### **Retirement Home**

All Saints' clergy regularly visit and conduct worship in several of the local retirement villages and rest homes.

### **Seasons for Growth**

This programme has been developed for children, adolescents and parents who have experienced major loss through bereavement, separation or divorce. The 9-session course, led by trained staff, is offered each school term. Seasons is a Diocesan programme, overseen at All Saints by a paid coordinator who is supported by a committee.

### **Selwyn Centre**

An interesting and innovative programme for retired/older people is held on Mondays and Fridays throughout the year in the Community Centre. A coordinator is employed by the Parish to administer the programme, which is financed through Selwyn Foundation grants.

### **Space**

Space is a parenting programme run at All Saints during the school term. Each programme lasts for 30 weeks and is run by trained facilitators. It currently operates at All Saints on Wednesday and Thursday mornings. Space is a Diocesan programme which follows a curriculum developed by Parenting Place and overseen by the Diocesan Space Programme Coordinator.



### **Thursdays @ Seven**

All Saints is widely known as a fine venue for the arts, and is often used for secular orchestral and other concerts. For 25 years, the Thursdays @ Seven concerts (three series per year) have drawn large audiences to enjoy top-class local and international musicians. These concerts are designed and coordinated by ex-parishioners Katharine & Peter Watts.



(Neighbourhood Project gathering in All Saints Community Centre)



(Congregation gathers for Morning Tea after a special service)

## CHILDREN, FAMILIES AND YOUTH

All Saints seeks to provide an environment where people of all ages feel welcomed, and we encourage the participation of children and their families in our worship and church life.

### Crèche

A sound-proof, child-friendly crèche room within the church enables the service to be heard and seen by those who need to be there.

### Kidztime

This teaching programme for children up to Year 6 is held during the central part of the 9.30 service on Sundays, during the school term.

### Youth Ministry

The future of the church is in our young people, and they are a valued part of parish life. At the moment we do not have different programmes for different ages. We are conscious of the need to nurture and expand our youth ministry as seen in the parish's priorities.

### Baptism

For parents who are considering baptism for their children we offer two options:

1. A service of thanksgiving, for those who wish to express their gratitude for the gift of a new child, and to have their son/daughter blessed. This may be held at home or in the church.
2. A service of baptism in which the child is received into membership of the Church, on the basis of the parents' public profession of faith. Baptisms are conducted as required as part of the 9.30 Sunday service.

## OUR SPECIAL INTEREST GROUPS

A variety of groups exist within the life of All Saints.

### Home Groups

A number of daytime and evening groups meet throughout the week for study, discussion and prayer. During Lent and Advent, a parish wide study group is held weekly.

### Tuesday Gang

A hard-working group of volunteers (both women and men) who maintain the church lawns and gardens and enjoy morning tea together on a Tuesday morning.

### Chinese Fellowship

This programme offers Cantonese-language worship on a monthly basis and a weekly Bible study.

### Eco Group

This group is a voluntary collective to help increase the sustainability of All Saints', resource church members in ways to decrease their ecological footprint and raise awareness about environmental community initiatives.



## MUSIC AT ALL SAINTS

Our parish has had a fine musical tradition through the years. Both church buildings have beautiful pipe organs, and we have a very good grand piano for use in recitals and worship.

### Choir

The All Saints' choir sings each Sunday morning at the 9.30 service, and prepares special music for the major seasons of the church year, especially Christmas and Easter. They practice weekly before the Sunday service.

### Sunday worship

The music in worship at All Saints is a mixture of traditional and contemporary, occasionally with a variety of instruments in conjunction with organ and piano.

## OUR HISTORY

All Saints' Anglican Church in Howick is one of the earliest churches in Auckland. Established in 1847, it has been a focal point in a community that has seen many changes through the years. We acknowledge the people of the land prior to the arrival of the Fencible/colony community, and we are mindful that there is work to be done to more fully appreciate our shared history.

The old All Saints' (Selwyn) church is Auckland's oldest church. It was prefabricated at St John's College, Meadowbank, and hauled by bullock wagon from Howick Beach. It was the first building to be erected in Howick. The first service was held in the church on 21 November 1847, although the roof had not been finished at that stage. Many early settlers are buried in the surrounding churchyard.

It is the icon of historic Howick and continues to be lovingly maintained and used for worship, weddings and funerals.

With the rapid growth of Howick in the 1960s, the old church proved inadequate for the congregation. And so the 'new' All Saints' was opened in 1970, with seating for about 400.

In 2000, the new church was extended to provide more flexible spaces for an increasingly diverse range of ministry activities. In June 2004, the old 'Cook Street Hall' was reopened as the substantially rebuilt All Saints' Community Centre.



## WORSHIP AT ALL SAINTS

Our way of worshipping God is firmly within the Anglican tradition, with the Eucharist at its centre. The liturgies usually follow those of the New Zealand Prayer Book, but these resources are used flexibly and with imagination. Since 'liturgy' is a Greek word meaning 'the work of the people', we seek to ensure that the gifts of many people are well used in our services through music, reading of the Bible, leading the prayers, welcoming newcomers, and assisting with the administration of communion. We are mindful that all our language is inclusive and we weave in Te Reo Māori drawing from the ANZP.

On average, nearly 140 people attend worship at All Saints every week, and congregation sizes vary from about 20 to 120. This means that, although All Saints is a large church, many parishioners relate only to the congregation or small group they normally attend.

### SERVICE TIMES

#### **Sunday, 7.30am Holy Communion**

A Eucharistic service, without hymns. The service is typically 50-60 minutes in length and is more contemplative in nature.

#### **Sunday, 9.30am Holy Communion**

A Eucharistic service, featuring a variety of music styles and liturgical presentation. This service is usually around 75 minutes in duration and is followed by morning tea in The Oak Room on the 1st and 3rd Sundays of the month. This service is live-streamed via YouTube, with a link being provided to parishioners. On the 2nd & 4th Sundays of the month, there is a conversation and reflection session on that day's readings and sermon which offers those present an opportunity to discuss these with presiding clergy members.

#### **Wednesday, 10.00am Holy Communion**

This service is held in the historic Selwyn Church during summer and in the Oak Room during winter.





## OUR FINANCES

The Howick Parish is fortunate in having an accumulation of investment funds, largely as a result of astute financial management and generous bequests in the past. As at the 31<sup>st</sup> December 2024 the Howick Parish had around \$400,000 invested in Trust Investment Management (excluding investment revaluation reserves), however, \$220,000 of these investments, are set aside for specific purposes, such as maintenance of the Selwyn Church, the cemetery and the Selwyn Church organ.

The difference between annual operating income and expenditure often results in an operating deficit which is reduced by the annual investment returns. We also have two residential rental properties, and a commercial tenant in part of our community hall, which provide additional income to our Parish.

The finances of the Parish are administered by Trust Management Limited with the support of our Treasurer. The finances are regularly reviewed by both the Parish Council and the Administration team.

We have a need for fiscal matters to be supported, and various fundraising initiatives promoted by the clergy team.

| FINANCIAL POSITION               | ACTUAL<br>2024 | BUDGET<br>2025 |
|----------------------------------|----------------|----------------|
| Other Income                     | 37,203         | 8,000          |
| Committed Giving                 | 205,123        | 200,000        |
| Other Giving                     | 51,300         | 50,000         |
| Legacies                         | 2,000          | -              |
| Investment Income                | 18,892         | 18,000         |
| Rent Received                    | 134,987        | 141,000        |
| <b>TOTAL OPERATING INCOME</b>    | <b>449,505</b> | <b>417,000</b> |
| Clergy Costs                     | 178,531        | 181,200        |
| Other Parish Staff               | 67,216         | 71,000         |
| Direct Property Expenses         | 90,050         | 97,000         |
| Property Administration Expenses | 38,290         | 45,000         |
| Finance Expenses                 | 266            | 300            |
| General Expenses                 | 48,848         | 49,000         |
| Depreciation                     | 69,723         | 70,000         |
| Giving beyond the Parish         | 40,213         | 43,800         |
| <b>TOTAL OPERATING EXPENSES</b>  | <b>533,137</b> | <b>557,300</b> |
| OPERATING SURPLUS (Deficit)      | (83,632)       | (140,300)      |

## MAKING AN APPLICATION

Thank you for your interest in the position of Vicar of the Parish of Howick. The Nomination Committee invites you to submit a formal application to the Bishop's Office, via:

**Archdeacon Michael Berry**

[michael.berry@aucklandanglican.org.nz](mailto:michael.berry@aucklandanglican.org.nz)

021 2256781

Your application should include:

- A cover letter of application from you, including how you feel your skills, experience, and strengths meet the needs of our Parish as expressed in this Parish Profile
- A copy of your Curriculum Vitae
- Two sermons. These can be in written format, or link to audio and/or visual recordings or services at which you have preached.
- The names and contact details of three referees which should include; a lay person from your current place of ministry.

Applications close on **Friday 2 May 2025**

Should you be shortlisted for the role:

- your referees will be contacted to complete a standard referee form. They may also be contacted for more information feedback as a part of the interview and discernment process.
- you will be invited to attend an interview on **Saturday 17 May 2025**.

Please do not hesitate to contact Archdeacon Michael if you have any queries related to this vacancy.

You can also find a little more about us on our parish website, [www.allsaintshowick.org.nz](http://www.allsaintshowick.org.nz)